

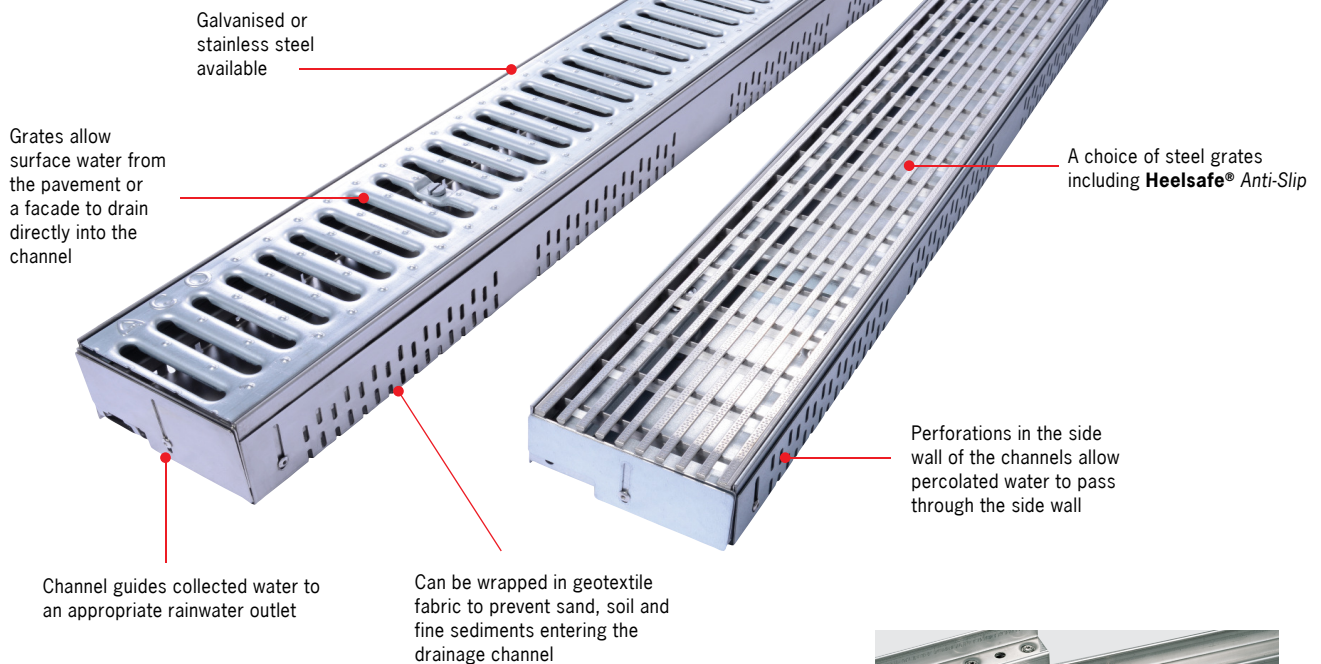
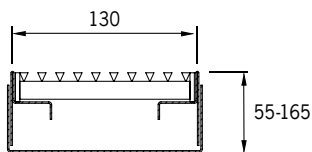
## ProfiLine

ProfiLine is particularly suitable for green roofs that require a balance of draining water, whilst keeping soft bedded areas moist for plants to flourish.

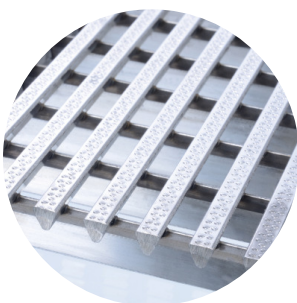
During heavy rain, the landscaping will become saturated and both surface and infiltrated runoff can be directed towards the channel which discharges into a roof or floor drain. During light rain, the water runoff from the surface or facade will percolate out of

the channel side walls and help irrigate the softscape.

An access grate permits entry for maintenance to the main stormwater connection.



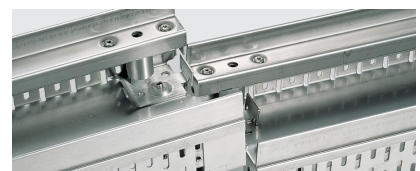
### Range of grates



**5 Star Heelsafe® Anti-Slip**



**Slotted**



Channels simply 'drop and lock' together with hooks and lugs on channel ends.



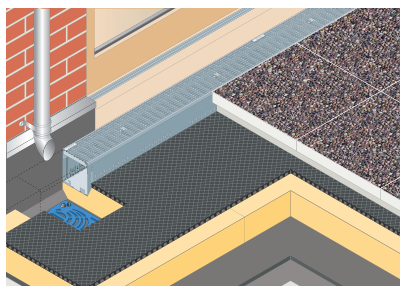
All channels are height adjustable. Each corner can be set independently to allow for both cross and longitudinal pitch if required.

|  | Slip resistance rating |              | Part No. |        | Length<br>mm | Width<br>mm | Height<br>mm | Wgt<br>kg |
|--|------------------------|--------------|----------|--------|--------------|-------------|--------------|-----------|
|  | Wet pendulum           | Wet barefoot | Galv.    | S/S    |              |             |              |           |
| Grates                                       |                        |              |          |        |              |             |              |           |
| 5 Star Heelsafe <sup>*</sup> Anti-Slip grate | P4                     | C            | –        | 141709 | 500          | 123         | 20           | 1.6       |
| 5 Star Heelsafe <sup>*</sup> Anti-Slip grate |                        |              | –        | 141710 | 1000         | 123         | 20           | 3.2       |
| Slotted grate                                | P3                     | –            | 00277    | 00273  | 500          | 123         | 20           | 1.0       |
| Slotted grate                                |                        |              | 00276    | 00272  | 1000         | 123         | 20           | 2.2       |
| Access units and grates                      |                        |              |          |        |              |             |              |           |
| 5 Star Heelsafe <sup>*</sup> Anti-Slip grate | P4                     | C            | –        | 141851 | 390          | 390         | 20           | 3.1       |
| Mesh grate                                   | –                      | –            | 38570    | –      | 390          | 390         | 20           | 3.8       |
| Access frame                                 | –                      | –            | 38801    | 38803  | 400          | 400         | 75 – 105     | 3.1       |
| Access frame extension                       | –                      | –            | 38685    | 38686  | 395          | 395         | 50           | 1.3       |
| Access frame extension                       | –                      | –            | 38687    | 38688  | 395          | 395         | 75           | 1.9       |

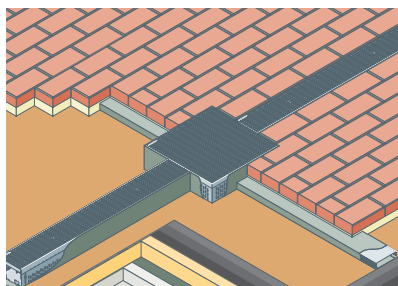
|                           | Part No. |       | Length<br>mm | Width<br>mm | Height<br>mm | Wgt<br>kg |
|---------------------------|----------|-------|--------------|-------------|--------------|-----------|
|                           | Galv.    | S/S   |              |             |              |           |
| Channels                  |          |       |              |             |              |           |
| Shallow section           | 36940    | 36942 | 500          | 130         | 55 – 77      | 3.1       |
| Shallow section           | 36941    | 36943 | 1000         | 130         | 55 – 77      | 4.9       |
| Intermediate section      | 36789    | 36837 | 500          | 130         | 75 – 105     | 3.3       |
| Intermediate section      | 36788    | 36836 | 1000         | 130         | 75 – 105     | 5.4       |
| Deep section              | 36807    | 36855 | 500          | 130         | 105 – 165    | 3.8       |
| Deep section              | 36806    | 36854 | 1000         | 130         | 105 – 165    | 6.4       |
| Adjustable length channel |          |       |              |             |              |           |
| Shallow section           | 36948    | 36949 | 50 – 600     | 140         | 55 – 77      | 2.1       |
| Intermediate section      | 36790    | 36838 | 50 – 600     | 140         | 75 – 105     | 2.2       |
| Deep section              | 36808    | 36856 | 50 – 600     | 140         | 105 – 165    | 2.9       |
| Adjustable corner         |          |       |              |             |              |           |
| Adjustable corner         | 38634    | 38643 | 300          | 300         | –            | 1.5       |
| End plates                |          |       |              |             |              |           |
| Shallow section           | 36950    | 36951 | n/a          | 130         | 55 – 77      | 0.1       |
| Intermediate section      | 36793    | 36841 | n/a          | 130         | 75 – 105     | 0.1       |
| Deep section              | 36811    | 36859 | n/a          | 130         | 105 – 165    | 0.2       |
| Drainage duct             |          |       |              |             |              |           |
| Drainage duct             | 00328    | 00307 | 2000         | 100         | 30           | 2.4       |

\* All dimensions in mm

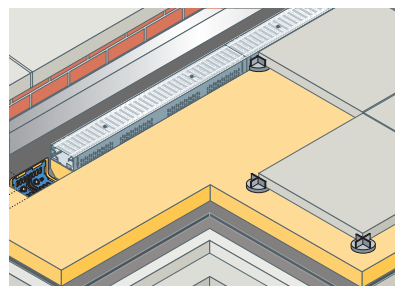
#### Typical Installation



Paved deck on drainage cell



Paved deck with sand bedding



Elevated paver deck

Visit [www.acobuildline.com.au/product-support/downloads/](http://www.acobuildline.com.au/product-support/downloads/) to download drawings