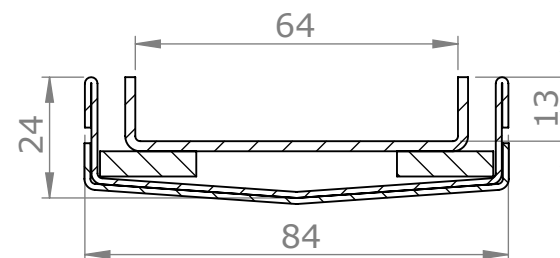


Specification Information Sheet

S85-25-T

85mm wide, 25mm deep channel with Tile grate (nominal)



Specification clause

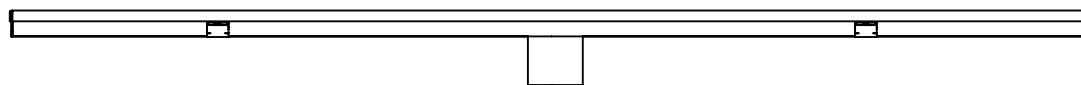
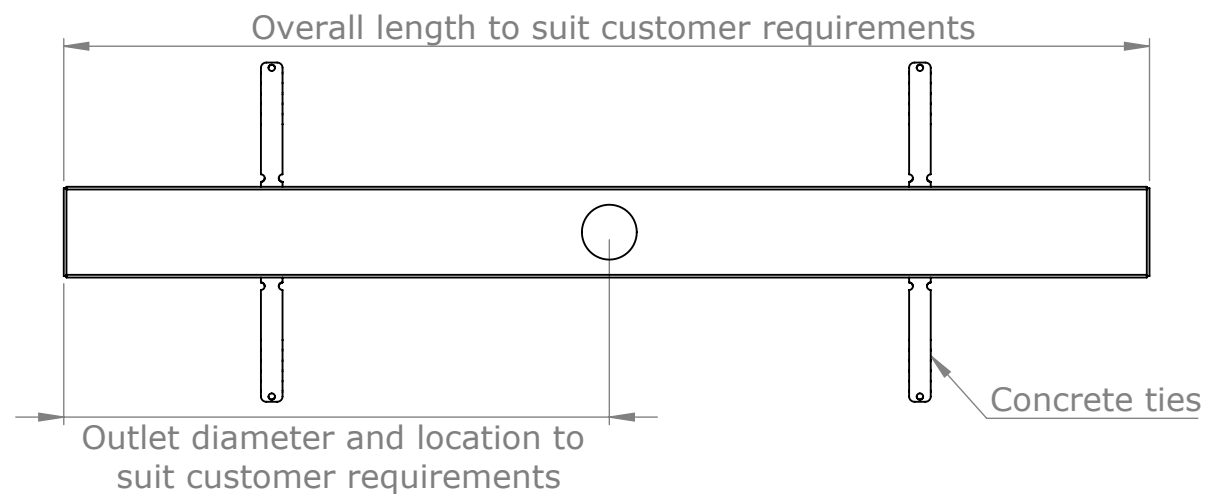
The floor channel and grates are to be type S-85-25-T (85mm wide, 25mm deep channel with Tile grates) grade 304/316 stainless steel, as supplied by ACO Pty Ltd.

The channels overall length, outlet position and outlet diameters are specified on drawing number/s _____.

All components used within the scope of the systems are shown on drawing number/s _____. All work should be carried out strictly in accordance with the manufacturer's instructions and the installation details set out on drawing number/s _____.

www.acobuildline.com.au
www.quartzbyaco.com.au

Ph: 1300 765 266 (Australia)
Ph: +61 2 4747 4000 (International)



*All dimensions in mm