

RainTrak®

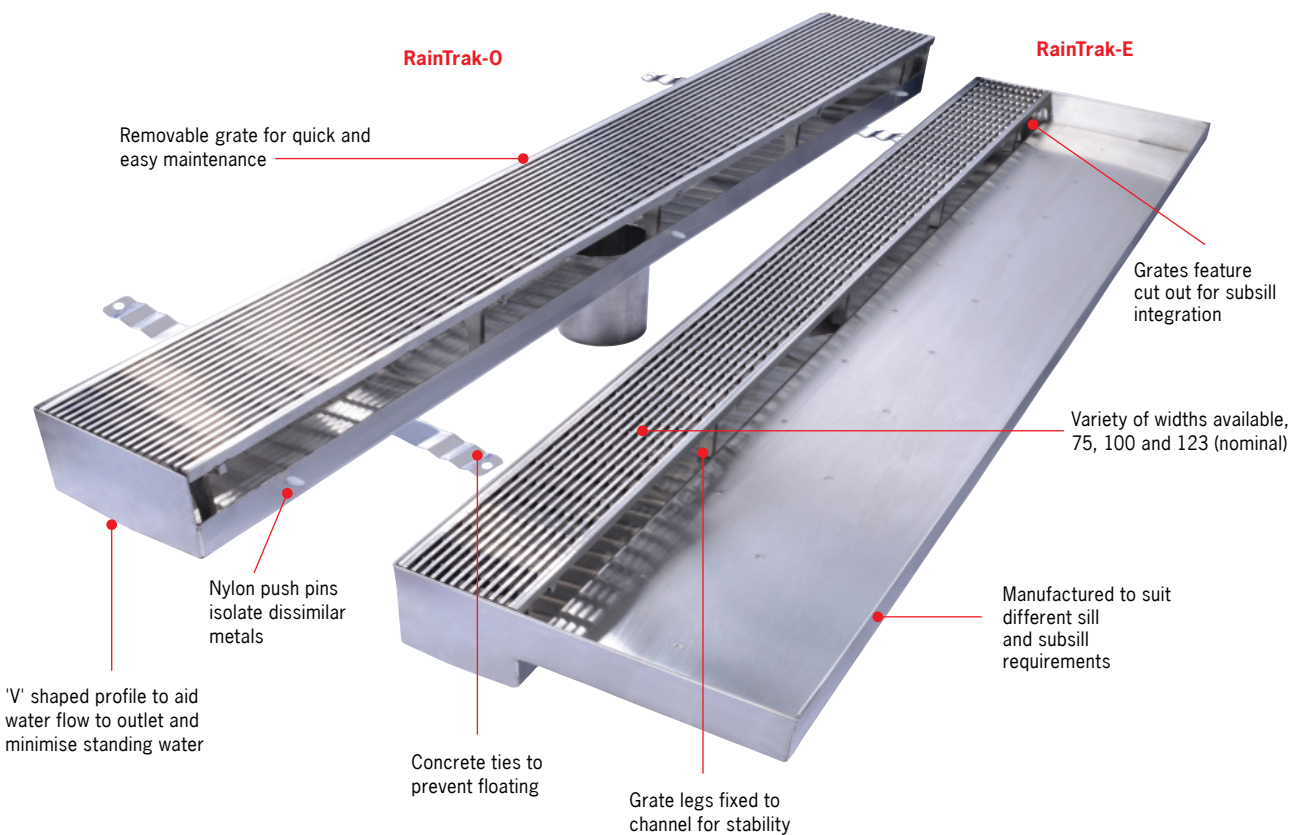
Each door manufacturer has differently designed doors, requiring customised drainage solutions that specifically suit the sill used on each project.

RainTrak® comprises two models:

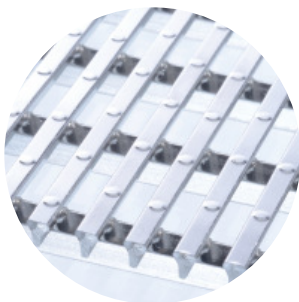
- **RainTrak-O:** Where the sill is not enclosed by the channel system and can be used with multiple door tracks
- **RainTrak-E:** Where the sill is enclosed by the channel system and the channel is made to suit a specific number of door tracks

To isolate the stainless steel channel from the aluminium doorsill, careful consideration has been given to the design of RainTrak®. Dissimilar metals cause galvanic corrosion. RainTrak® features nylon push-pins to ensure critical separation. This arrangement works in conjunction with the packers and sealants used during setup and installation of the sill.

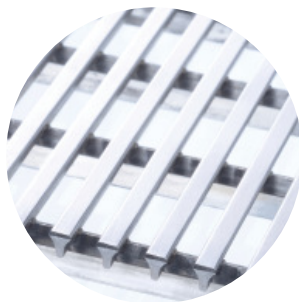
Note: It is the designer's responsibility to ensure that channels are fit-for-purpose and meet all requirements, including sill compatibility and hydraulic performance.



Range of grates



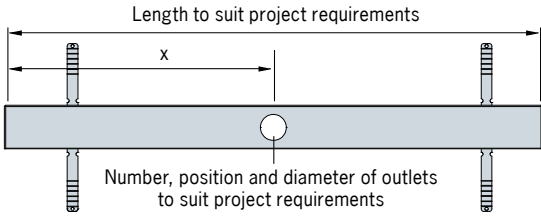
Linéaire



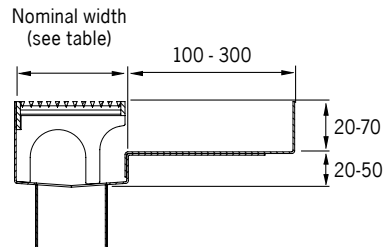
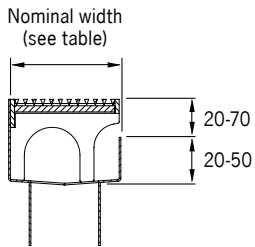
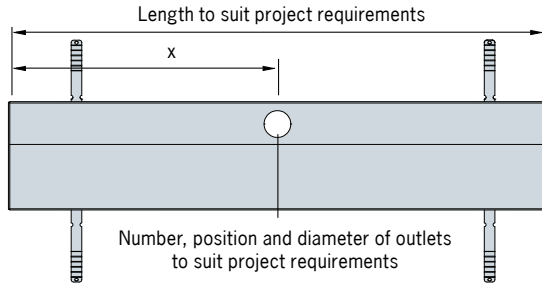
Affiner



RainTrak-O



RainTrak-E



* All dimensions in mm

Type	Grate type	Slip resistance rating		Nominal channel width (mm)	Specification code
		Wet pendulum	Wet barefoot		
RainTrak-O	Linéaire	P1	-	75	RT075L
				100	RTO100L
				123	RTO123L
RainTrak-O	Affiner	P1	A	75	RT075A
				100	RTO100A
				123	RTO123A
RainTrak-E	Linéaire	P1	-	75	RTE75L
				100	RTE100L
				123	RTE123L
RainTrak-E	Affiner	P1	A	75	RTE75A
				100	RTE100A
				123	RTE123A

* To customise your requirements, contact ACO.

